

ENROLLMENT RATES

Effective January 1, 2017

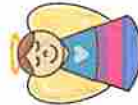
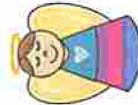
Child's Age Group	Fee per Day	Fee per 5 Full Days
Infants	\$81	\$375
Toddlers	\$76	\$350
Preschoolers	\$71	\$320
Part-time Preschoolers (5 hours or less)	\$50	\$235

Enrollment Registration - \$50

Annual Registration - \$40

We provide morning and afternoon snacks, water and milk. Parents must provide a daily lunch.

Enrollment is on a first-come, first-serve basis (min. 2-day enrollment required).



Maples Little Angels AT MRNC is a private, non-denominational child care facility. We do not discriminate in our enrollment policy. We are open to all regardless of sex, race, color, religion, cultural heritage, national origin, political beliefs, marital status, sexual orientation, or disability.

EEC LICENCED

Maples Little Angels is an early education and care facility licensed by the Commonwealth of Massachusetts Department of Early Education and Care to provide education and care for children from 8 weeks through 6 years old.

The children are combined in two groups:

Infant/Toddler

8 weeks through 2.9 years

Preschoolers

2.9 years through 6 years

HOURS OF OPERATION

Maples Little Angels is open year-round, Monday through Friday from 6:15 a.m. to 6:00 p.m.

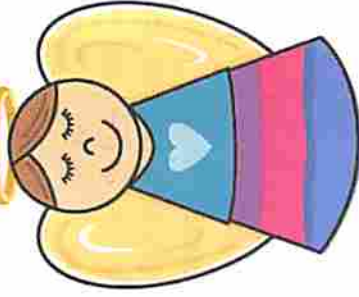
HOLIDAY SCHEDULE

The center is closed on these holidays:

New Year's Day	Independence Day
Presidents' Day	Labor Day
Patriots' Day	Thanksgiving Day
Memorial Day	Christmas Day



MAPLES LITTLE ANGELS
AT MRNC



90 Taunton Street
Wrentham, MA 02093

508/384-9535

mla@maplesrehab.com

Co-Directors:

Peggy Bandarra

Margaret Eaton





Peggy Bandarra
Margaret Eaton
Co-Directors

PHILOSOPHY AND GOALS

At Maples Little Angels **AT MRNC**, we believe in providing quality care and educational experiences for your family. Each child – each family is unique, bringing its own identity, needs, and richness to our program.

In building a program designed to provide care and education for your child we have established the following goals:

TO CREATE A SAFE, SECURE ENVIRONMENT

CHILDREN WHO FEEL SAFE, VALUED, AND ACCEPTED are free to grow physically, emotionally, socially, and intellectually. These children welcome new experiences, stretch their creativity and imagination and form positive new relationships. Combining age appropriate limits and boundaries with positive guidance and discipline techniques provides the foundation for this environment.



TO CREATE A COMPREHENSIVE PROGRAM

WE SUPPORT the criteria of the National Association of Education for Young Children (NAEYC) for early care and education, offering a variety of developmentally appropriate learning experiences. As children explore their world through play, they develop thinking and problem solving skills and a genuine love for learning. Allowing children to make choices throughout the day supports self-confidence and fosters independence in each child.

TO CREATE A COOPERATIVE RELATIONSHIP

WE RECOGNIZE parents as the most significant figures in their children's lives. Establishing mutual respect and understanding between parents and staff provides a model, which benefits everyone – especially the child. We encourage daily communication with parents and welcome your participation and input.

TO CREATE A SENSE OF COMMUNITY

WE CELEBRATE the similarities and the differences of each child and each family. Respecting and accepting

each other builds tolerance and understanding within our community.

Being located in Maples Rehabilitation and Nursing Center allows us to reach out beyond ourselves to another community as we join in inter-generational activities with the residents.



What makes Maples Little Angels unique or somewhat different from other centers?

SIZE

Our maximum capacity of 29 children allows us to feel more like an extension of your home and family.

MIXED AGES

Our more family-like mixed age grouping provides children freedom to explore and develop at their own rate.

LOCATION

Our extended family in Maples Rehabilitation and Nursing Center enriches our world as we share inter-generational programs and experiences.